






### Lime Green SOLO (over GUTEX Thermoroom or Celenit) APPLICATION GUIDE

(Mar 2019 – alternative to Thermoroom plaster finish)

Use: internal only

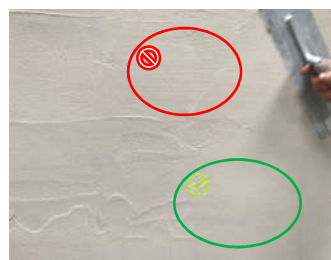
Application: trowel

Coverage: ~1.50m<sup>2</sup>/bag at 10mm thick. Overall thickness on Thermoroom ~8-10mm, on Celenit ~6-8mm

<p><b>INSTALL SUPPORTING BOARDS</b></p> <ul style="list-style-type: none"><li>• Adhere THERMOROOM as usually</li></ul> <p>or</p> <ul style="list-style-type: none"><li>• Fix CELENIT as usually</li></ul>	 
<p><b>TROWEL APPLY 1<sup>ST</sup> LAYER OF LIME GREEN SOLO</b></p> <ul style="list-style-type: none"><li>• ~4-5mm thick on Thermoroom, ~3-4mm on Celenit</li></ul>	
<p><b>EMBED GUTEX FIBREGLASS MESH</b></p> <ul style="list-style-type: none"><li>• Make sure mesh is in the outer 50% of <u>overall</u> thickness</li><li>• Overlap mesh sheets by 10cm at least (overlap follow the orange guide section)</li></ul>	 

**TROWEL APPLY 2<sup>ST</sup> LAYER OF LIME GREEN SOLO**

- ~4-5mm thick on Thermoroom, ~3-4mm on Celenit
- At 16-17°C temperature apply 2<sup>nd</sup> layer same day before 1<sup>st</sup> if is fully dry (after a couple of hours) for creating monolithic bonding.
- Mesh should be fully covered (marks from grid not visible)



**SURFACE SMOOTHING**

- Leave a couple of hours for 2nd to slightly dry
- **Smooth** the surface with wet sponge to get rid of the marks.
- You can leave it sponged if a textured finish is required.
- Polish the surface with a flexible trowel



**PAINTING OVER**

- Drying time before painting ~ 5mm/week (less for Fresco Lime Paint or Lime wash)
- Dries white
- Can be left unpainted

