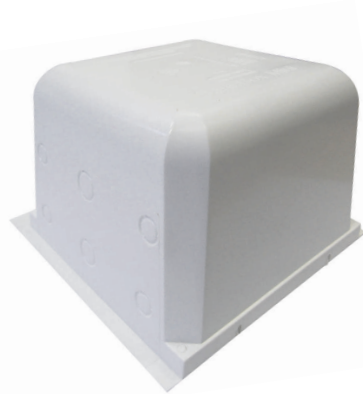


Optime Downlight Protector Mini/Maxi

Airtight flush
mounted housing
for downlights



Airtightness best practice dictates that surface penetrations of the external envelope should be minimised. Downlights present particular challenges for airtight design and continuity of the insulation layer. However, if downlights are present there is a robust solution in the OPTIME Downlight Protector housing units.

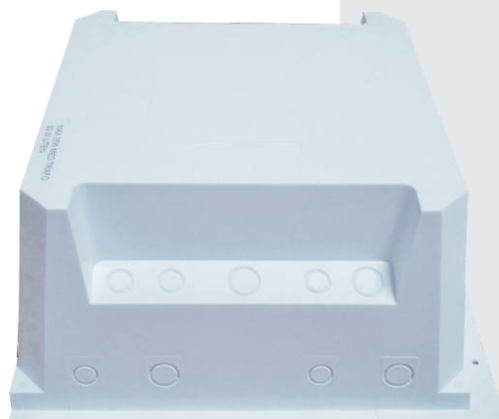
Designed as an innovative one stop solution for achieving a safe, easy to install sealing system for downlights. Optime Downlight Protector housing boxes are offered in either Maxi or Mini housing units. The Optime Maxi will accommodate a transformer, the Mini is suitable only to house the downlight. Downlight Protector Mini is designed to suit all types of roofs and ceilings as it is very suitable in narrow places. Optime Downlight Protector boxes significantly reduce the carbon footprint of buildings which incorporate downlights as well as improving comfort and minimising problems associated with condensation in cold attics.



Optime Maxi



Optime Mini



Features:

- The Mini is especially made for narrow spacings - 200 x 200 x 140 mm.
- Simple to install.
- Can be used for most conventional timber ceilings.
- Ensures an effective moisture barrier is maintained.
- Optime Downlight Protector Mini/Maxi should only be used with low wattage downlights.
- Made from non-flammable material.
- Please note Optime Downlighters are NOT fire rated.
- Recognised by Nemko.
- Made from recyclable material.
- It is important that the downlight is positioned at the centre of the box.
- Optime Downlight Protector Mini/Maxi should not be used in wet rooms.

Installation Details

Optime Downlight Protector Mini/Maxi is a flush-mounting housing unit for Downlights. It has been designed to suit all types of roofs and ceilings and due to its size is very suitable for use in narrow places. Optime Downlight Protector Mini/Maxi is specifically designed as an innovative all in one solution for achieving a safe, easy to install sealing system for Downlights. Optime Downlight Protector Mini/Maxi offers a solution addressing many issues which arise when specifying downlights.

The Downlight Protector Mini is made especially for narrow spacings as it is only 200 x 200 x 140mm. It is simple to install by mechanically fastening the box to adjacent joists or noggins and can be used for most types of conventional timber ceilings. The larger Optime Downlight Protector Maxi has a dimension of 320 x 320 x 160mm in order to accommodate a transformer. It is installed in a similar manner to the Mini.

Connections are made via electrical conduits, through the specially adapted (16/20mm) apertures, which can easily be removed to fit flexible pro clima STOPPA gaskets.

Pro clima Stoppas - Airtight plugs for conduits

Optime Downlight Protector Mini/Maxi should be securely fixed to the timber noggining or joist through the perforated holes in the side of the Optime Downlight Protector Mini/Maxi.



Optime Downlight Protector Mini Box with pro clima Stoppas to create a full airtight seal.

Technical Characteristics:

Optime Downlight Protector Mini/Maxi is made from non-flammable and recyclable material. It has been tested for fire resistance to comply with stringent European Standards and it has the CE mark. Optime Downlight Protector Mini/Maxi is recognised by Nemko. Nemko is registered in the UK as a certification body for plugs, socket outlets and other electrical accessories tested according to standard BS1363. Optime Downlight Protector Mini or Downlight Protector Maxi should NOT be relied upon as an independent fire resistant layer. The fire resistance of a downlight is determined by the fitting between the downlight itself and the fitting to the plasterboard.

A transformer should not be placed within the Optime Downlight Protector Mini, as the limited size of the box may lead to temperature accumulation within the small box. The transformer should either be mounted externally or in the larger housing, the Optime Downlight Protector Maxi.



3rd party accreditation:

Optime Box Mini Dimensions:
200 x 200 x 140mm

Optime Box maxi Dimensions:
320 x 320 x 160mm

Ecological Building Systems

For stockist information and full technical support for your project, please contact Ecological Building Systems or visit www.EcologicalBuildingSystems.com

Ireland: 046 9432104 Fax: 046 9432435 UK: 01228 711 511 Fax: 01228 712 280



info@EcologicalBuildingSystems.com