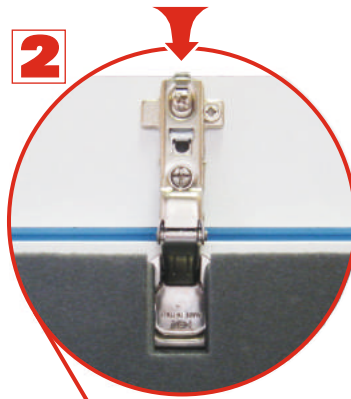


Installation Guide Access Hatch DeckenTüre



Before placing Access Hatch into ceiling opening:
Glue in sealing tape
(Installation Guide Connection System)

1 Screw ring eye flush into catch.



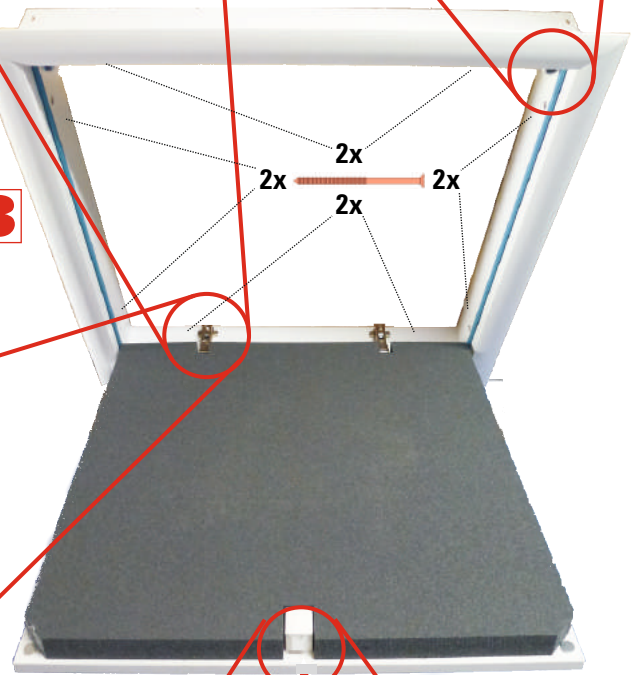
2 For easier installation:
Detach hatch door with concealed hinges.

3 Place **frame** in ceiling opening and **adjust:**

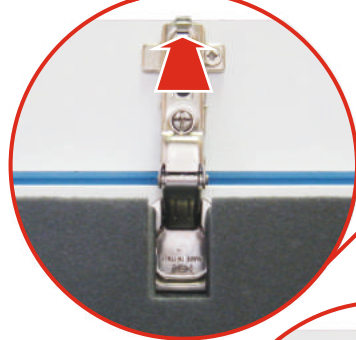


- even out the surrounding gap (max. 2 cm)
 - flush to ceiling (spirit level)
 - at right angles (remeasure diagonals)
- Underlay and **screw tight (2x per side).**

3



4 Click hatch door back into place:

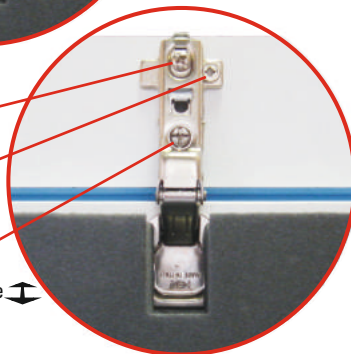


5 Align hatch door exactly:

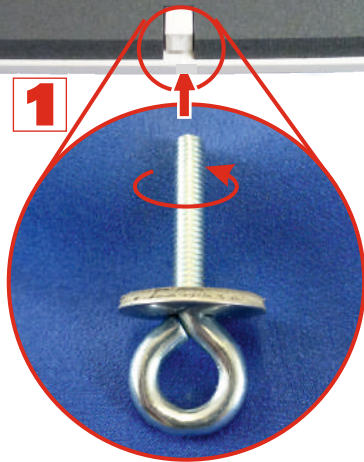


Adjustments with the appropriate screws:

- depth \updownarrow
- width of gap left/right \leftrightarrow
- width of gap catch side / hinge side \updownarrow



1



6 Adjust magnets for proper closing.



Push in insulation braid,
glue on sealing tape.
(Installation Guide Connection System)

Safety instruction:
Do not lean ladder on access hatch door!

After completion of any other work on the ceiling:

7 Mount architraves:
Interlock. Test. Uncover adhesive tape. Press on firmly. Fix.
(Installation Guide Architraves)

weilhöfer
TREPPEN AUS WÜRZBURG