



IndiNature®

www.indinature.co
sales.uk@indinature.co

IndiBreathe® FLEX

For a breathable thermal envelope, vapour open flexible insulation batts made with UK industrial hemp & recycled jute.

- Exceptional vapour transport and moisture management – keeping buildings dry and preserving building fabric.
- Circular by design, with recycled content and can be reprocessed at the end of life.
- Reduce embodied & operational carbon emissions.
- Light and soft to touch for installers.
- Durable and with rigidity to resist slumping.
- Warm in winter, cool in summer – indoor temperatures and humidity stay comfortably even.

Storage and handling

Product must be kept dry during storage and delivery. Pallets must not be stacked.

Installation

Friction fit between structural framing or against masonry. Best cut with wave form insulation blades – available as handsaws or powered dual-blade reciprocating saws. Keep blades sharp. Only install in dry spaces. Ensure continuous airflow under suspended floors, through eaves and min 50mm air gaps under sarking. Refer to Install Guide.

Environmental impacts

IndiBreathe Flex has a net storage of carbon. It reduces waste because it can be reused or reprocessed at end of life, and is made with renewable resources from industrial hemp blended with recycled materials from reprocessed coffee sacks and hessian jute fibres.



Available formats*

Dimensions (mm)	Thicknesses (mm)
370 x 1,200	40, 60, 80, 100, 140
570 x 1,200	40, 60, 80, 100, 140

*Other sizes may be available on request.

Technical data

Thermal Conductivity λ (W/m.K)	0.039, 20-100mm 0.042, 120-140mm
Density ρ	34 kg/m ³
Specific Heat Capacity C	2370 J/(kgK)
Vapour Diffusion Resistance μ	1.3
Reaction to Fire	E – PASS
Sound Reduction	Min 41dB (50mm+)
Sound Absorption	Class C (40mm) – Class A (100mm)
Carbon (A1-3 LCA 2024)	-0.51 kgCO ₂ eq/kg

Manufactured by Industrial Nature UK Ltd

IndiNature Mill, Oxnam Rd, Jedburgh, Scottish Borders, TD8 6NN.
Company No. SC655203. sales.uk@indinature.co / 01835 867 070

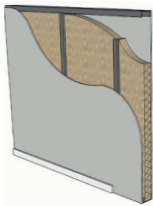
Available from natural fibre insulation distributors: Ecological Building Systems.
INUK5SMD_008_2411_IndiBreatheFlex_DataSheet. Details subject to change.





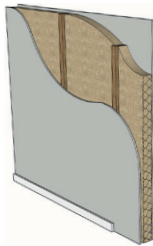
IndiBreathe® FLEX Acoustic Guide

Internal Partition Walls



Metal Frame – Single Plasterboard

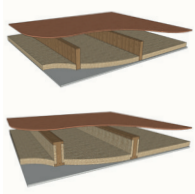
Stud Size	Stud Spacing	Plasterboard	IndiNature Insulation	Insulation Dimensions	Sound Reduction	UKAS Lab Certificate
50mm Metal C Stud	600mm	12.5 mm standard Gyproc wallboard	IndiBreathe Flex – Hemp /Jute *BBA	50mm	41dB (Rw)	17346



Timber Frame

Stud Size	Stud Spacing	Plasterboard	IndiNature Insulation	Insulation Dimensions	Sound Reduction	UKAS Lab Certificate
89mm x 38mm timber	600mm	15mm standard Gyproc wallboard	IndiBreathe Flex – Hemp /Jute *BBA	50mm	45dB (Rw)	17357
89mm x 38mm timber	600mm	15mm standard Gyproc wallboard	IndiBreathe Flex – Hemp /Jute *BBA	80mm	45dB (Rw)	17356

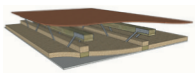
Internal Partition Floors



Solid Timber Joists & i-joists

Joist Size	Joist Centres	Plasterboard	IndiNature Insulation	Insulation Thickness	Sound Reduction	UKAS Lab Certificate
Solid: 195mm x 44mm i-joist: 220mm x 90mm flange / 10mm web	450mm	15mm standard Gyproc wallboard	IndiBreathe Flex – Hemp /Jute *BBA	50mm	41dB (Rw)	17989

Posi-joists



Joist Size	Joist Centres	Plasterboard	IndiNature Insulation	Insulation Thickness	Sound Reduction	UKAS Lab Certificate
Posi-joist: 225mm x 97mm	600mm	15mm standard Gyproc wallboard	IndiBreathe Flex – Hemp /Jute *BBA	50mm	47dB (Rw)	17998

All floors constructed with 22mm T&G floorboards.

For over 20 years, Ecological Building Systems has been at the forefront of environmental and sustainable building products supplying a range of innovative airtightness solutions and natural insulations backed up with expert technical support.

As product suppliers in the UK and Ireland, we're happy to assist you with your projects and have expert technical and sales advice on hand.



Call us

Great Britain +44 (0)1228 711511

Ireland +353 46 9432104



Email us

info@ecologicalbuildingsystems.com



Find us

Great Britain Ecological Building Systems UK Ltd.,
Cardewlees, Carlisle, Cumbria, CA5 6LF,
United Kingdom

Ireland Ecological Building Systems Ltd.,
Main Street, Athboy. Co. Meath, C15 Y678,
Republic of Ireland