

## USERS

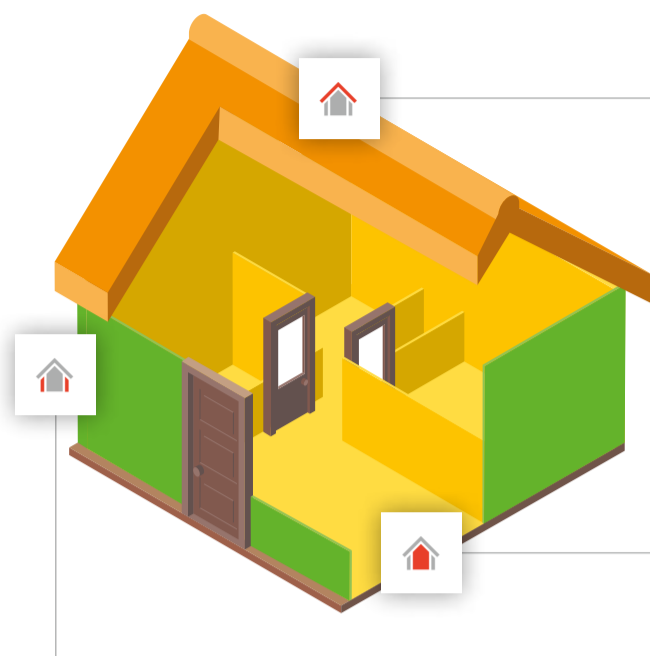
The right wood fibre insulation  
for roofs, façades, and interiors



## Content

<b>Applications and solutions</b> .....	
Roof .....	
Façade .....	
Interior .....	
<b>Product overview</b> .....	
Ecological wood fibre insulation for new bu to the basement ceiling .....	
GUTEX Multiplex-top .....	
GUTEX Ultratherm .....	
GUTEX Thermosafe-homogen .....	
GUTEX Thermoflat .....	
GUTEX Thermoflex .....	
GUTEX Thermofibre .....	
GUTEX Multitherm .....	
GUTEX Thermoinstal .....	
GUTEX Thermoroom .....	
GUTEX Thermosafe-wd .....	
GUTEX Thermosafe-nf .....	
GUTEX Thermofloor .....	
GUTEX Happy Step .....	
GUTEX Standard-n .....	
GUTEX Thermowall .....	
GUTEX Thermowall NF .....	
GUTEX Thermowall-gf .....	
GUTEX Thermowall-L .....	
GUTEX Thermowall Durio .....	

# APPLICATIONS AND SOLUTIONS



## Roof

- **Tecadio roof renovation system**
- On-roof insulation
- Sarking boards
- Flat roof insulation
- Panel insulation (GUTEX Thermoflex insulation mat and GUTEX Thermofibre blow-in insulation)

## Interior

- **Intevio interior insulation system**
- Sarking from inside
- Under-rafter insulation
- Insulation under screed (dry/wet)
- Suspended ceiling
- Solid wood floor/wooden floor
- Insulation of installation level
- Partition walls
- Panel insulation (GUTEX Thermoflex insulation mat and GUTEX Thermofibre blow-in insulation)

## Façade

- **Thermowall ETICS thermal insulation system**
- Render
- Rainscreen façade
- Clinker facing shell
- **Durio façade insulation system**
- **Implio window and door integration system**
- Panel insulation (GUTEX Thermoflex insulation mat and GUTEX Thermofibre blow-in insulation)



## Roof

### Heat protection, sound insulation, i

With roof insulation materials from GUTEX, sarking boards are not only rainproof; they are also soundproof. Our insulation materials also reliably protect against heat loss, thanks to low thermal conductivity and a very high moisture capacity and strong moisture storage and release capacity. The high flexural strength and strong moisture storage and release capacity make the boards resistant to warping. This robustness means faster handling and installation. No glue or sealing tapes are not required to produce airtight joints. The boards can be exposed to the elements for twelve weeks.

### Benefits

- Sarking boards with patented tongue and groove system
- TÜV-tested hail protection (hail protection class 1)
- High resistance to ageing
- Cross-brand cooperation with system partners for adhesive technology
- Seminars for systematic knowledge transfer



## Façade

### Energy efficiency, comfort, healthy living

With GUTEX systems and products for insulating façades, you can build to efficiency house standards and at the same time ensure a comfortable and healthy home. GUTEX Thermowall is the ETICS for timber and solid construction. The Durio façade insulation system offers you maximum freedom in exterior wall design. Implio supports the creation of optimal connections in the ETICS. In the rainscreen façade, you can use our wood fibre insulation boards universally: on masonry, solid wood, and wooden post-and-beam structures.

### Benefits

- Thermowall ETICS with supplementary general building authority approval: render can be purchased from 16 manufacturers
- ETICS to be mounted directly on the wooden studs
- Vapour-permeable external insulation for maximum façade safety
- Cross-brand cooperation with system partners, e.g. render manufacturers
- High transparency and safety in planning and handling thanks to 340 timber wall constructions confirmed by fire experts

## Interior

### Improved thermal insulation, good sound

The Intevio interior insulation system is easy to install and can be applied to any wall or ceiling. Thanks to low costs and high energy efficiency, it is a cost-effective solution. GUTEX floor insulation boards are suitable for a wide range of applications, from sound insulation to a wide range of installation options. Under wet screed, our panel insulation materials. Under wet screed, screed, prefabricated parquet, laminate, hardwood, etc. Various solutions are also available for the construction of floors.

### Benefits

- Moisture-tolerant interior insulation system
- Insulation boards with top impact and airbo
- Numerous tested and evaluated sound insul
- Floor insulation boards with high compressi



# PRODUCT OVERVIEW

## Ecological wood fibre insulation for new builds and modernisation projects – from the roof to the basement ceiling

GUTEX has the right wood fibre insulation solution for every need: as a thermal insulation system, as wall insulation for rainscreen façades, on-roof or panel insulation with rainproof sarking boards, insulation for floor ceilings, interior insulation for exterior walls, insulation for installation levels, impact sound insulation for floors, and as a sound-absorbing base for hardwood and laminate flooring. Our products are made of Black Forest fir and spruce from sustainable forestry and meet the highest quality standards. The KEYMARK certification mark confirms that they comply with all relevant EU standards.



**GUTEX Multiplex-top**  
Certified rainproof sarking board



**GUTEX Ultratherm**  
Unique rainproof sarking board thanks to patented tongue and groove profiling – with a high insulation value



**GUTEX Multitherm**  
Moisture-resistant wood fibre insulation board for rainscreen façades, as additional above-rafter insulation, or as under-rafter insulation



**GUTEX Thermosafe-homogen**  
Universal wood fibre insulation board with excellent insulation properties for roofs and exterior walls.



**GUTEX Thermofibre**  
Wood fibre blow-in insulation for panels and as exposed insulation on horizontal surfaces



**GUTEX Thermoflex**  
Flexible wood fibre insulation mat for between-rafter and panel insulation



**GUTEX Thermoflat**  
Pressure-resistant wood fibre insulation board for flat roofs made of wood, concrete, or sheet metal



**GUTEX Thermoinstal**  
Pressure-resistant wood fibre insulation board for installation levels



**GUTEX Thermoroom**  
Wood fibre insulation board for interior insulation of exterior walls



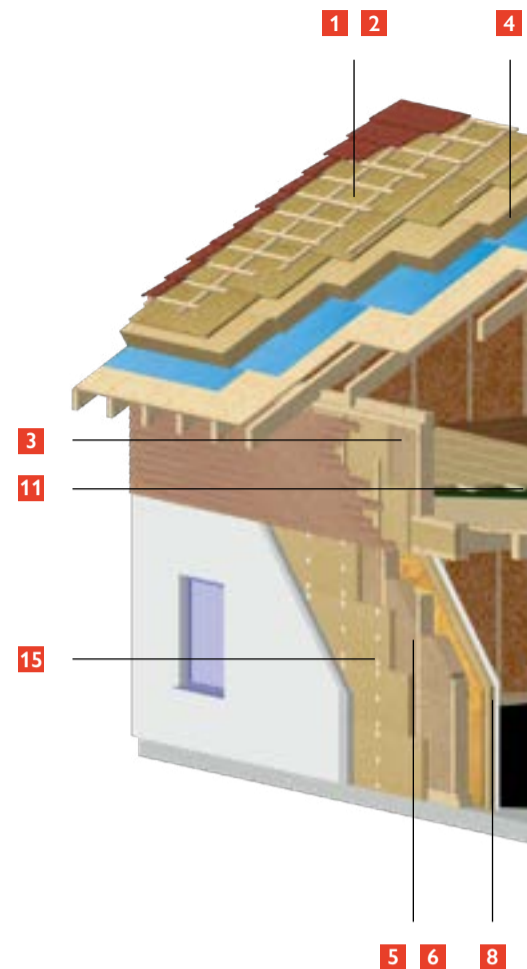
**GUTEX Thermosafe-wd**  
Pressure-resistant wood fibre insulation board for interior floor and wall structures



**GUTEX Thermosafe-nf**  
Impact sound insulation board with a spruce installation strip – ideal as a substructure for screwed floorboards or hardwood floors



**GUTEX Thermofloor**  
Impact sound insulation board for all floor structures



**GUTEX Happy Step**  
Base board for increased walking comfort and impact sound insulation, e.g. with hardwood floors



**GUTEX Stand**  
Underlay manufactured using a wet process in various thicknesses and is ideal for smoothing out uneven floors



**GUTEX Thermowall Durio**  
Special board in the Durio façade insulation system for rendered and rainscreen wood façades.

Product name	GUTEX Multiplex-top			GUTEX Ultratherm			
Bulk density $\rho$ [kg/m <sup>3</sup> ]	~ 220			~ 180			
Nominal thermal conductivity $\lambda_D$ [W/mK]	0.045			0.042			
Vapour diffusion $\mu$	3			3			
Compressive stress/strength [kPa]	≥ 200			≥ 150			
Tensile strength perpendicular to the surface [kPa]	≥ 30			≥ 20			
Short-term water absorption [kg/m <sup>2</sup> ]	≤ 1			≤ 1			
Air flow resistivity [kPa s/m <sup>2</sup> ]	≥ 100			≥ 100			
Specific heat capacity [J/kgK]	2100			2100			
Maximum working temperature [°C]	110			110			
Fire reaction Euro Class as per EN 13501-1	E			E			
Joint type	Tongue and groove			Tongue and groove			
Thickness [mm]	22	28*	35	50*	60	80	100
Length x width [mm x mm]	2500 x 750			1780 x 600			
Actual coverage: Length x width [mm x mm]	2480 x 728		2480 x 722	1749 x 569			
Actual coverage: Square metres per board [m <sup>2</sup> ]	1.81		1.79	1.00			
m <sup>2</sup> /Piece(s)	1.87			1.06			
Weight per board [kg]	9.07	11.55	14.44	9.60	11.50	15.40	19.20
Weight per m <sup>2</sup> [kg]	4.84	6.16	7.70	9.00	10.80	14.40	18.00
Piece(s)/Pallet	45	35	30	42	36	26	20
Square metres per pallet [m <sup>2</sup> ]	84.37	65.62	56.25	44.85	38.44	27.76	21.36
Weight per pallet [kg]	520	430	485	490		430	390
Nominal thermal resistance $R_D$ [m <sup>2</sup> K/W]	0.50	0.60	0.75	1.15	1.40	1.90	2.35
sd value [m]	0.07	0.08	0.11	0.15	0.18	0.24	0.30

\* Article currently not available

Product name	GUTEX Thermosafe-homogen												GUTEX Thermoflat											
Bulk density $\rho$ [kg/m <sup>3</sup> ]	~ 110												~ 140											
Nominal thermal conductivity $\lambda_D$ [W/mK]	0.039												0.040											
Vapour diffusion $\mu$	4												3											
Compressive stress/strength [kPa]	$\geq 50$												$\geq 70$											
Tensile strength perpendicular to the surface [kPa]	$\geq 5$												$\geq 7.5$											
Short-term water absorption [kg/m <sup>2</sup> ]	$\leq 2$												$\leq 1$											
Air flow resistivity [kPa s/m <sup>2</sup> ]	$\geq 60$												$\geq 100$											
Specific heat capacity [J/kgK]	2100												2100											
Maximum working temperature [°C]	110												110											
Fire reaction Euro Class as per EN 13501-1	E												E											
Joint type	Flush-mount						Rebate joint						Rebate joint											
Thickness [mm]	40	60	80	100	120	140	160	180	200	220	240	100	120	140	160	30	40	50	60					
Length x width [mm x mm]	1200 x 625												1230 x 600											
Actual coverage: Length x width [mm x mm]													1185 x 610				1215 x 585							
Actual coverage: Square metres per board [m <sup>2</sup> ]													0.72				0.71							
m <sup>2</sup> /Piece(s)	0.75												0.73											
Weight per board [kg]	3.30	5.00	6.60	8.30	9.90	11.60	13.20	14.90	16.50	18.20	19.80	10.30	12.40	14.50	16.50	1.20	1.60	1.90	2.30					
Weight per m <sup>2</sup> [kg]	4.40	6.60	8.80	11.00	13.20	15.40	17.60	19.80	22.00	24.20	26.40	14.00	16.80	19.60	22.40	1.50	2.00	2.50	3.00					
Piece(s)/Package																	12	8	9	8				
Packs per pallet																	12	14		10				
Piece(s)/Pallet	112	70	56	42	36	32	28	24	22	20	18	44	36	32	28	144	112	90	80					
Square metres per pallet [m <sup>2</sup> ]	84.00	52.50	42.00	31.50	27.00	24.00	21.00	18.00	16.50	15.00	13.50	32.47	26.56	23.61	20.66	111.78	86.94	69.86	62.10					
Weight per pallet [kg]	430	380	390	340	380	420			410			490												
Nominal thermal resistance $R_D$ [m <sup>2</sup> K/W]	1.00	1.50	2.05	2.55	3.05	3.55	4.10	4.60	5.10	5.60	6.15	2.50	3.00	3.50	4.00	0.80	1.10	1.35	1.65					
sd value [m]	0.16	0.24	0.32	0.40	0.48	0.56	0.64	0.72	0.80	0.88	0.96	0.30	0.36	0.42	0.48	0.06	0.08	0.10	0.12					

Product name	GUTEX Thermofibre		GUTEX Multitherm										GUTEX Therm
Bulk density $\rho$ [kg/m <sup>3</sup> ]			~ 140										~ 150
Blow-in bulk density $\rho$ exposed [kg/m <sup>3</sup> ]	25 – 30												
Blow-in bulk density $\rho$ enclosed [kg/m <sup>3</sup> ]	29 – 50												
Nominal thermal conductivity $\lambda_D$ [W/mK]	0.038		0.040										0.040
Vapour diffusion $\mu$	2		4										3
Compressive stress/strength [kPa]			$\geq 70$										$\geq 100$
Tensile strength perpendicular to the surface [kPa]			$\geq 7.5$										$\geq 10$
Short-term water absorption [kg/m <sup>2</sup> ]			$\leq 1$										
Air flow resistivity [kPa s/m <sup>2</sup> ]	$\geq 3$		$\geq 60$										$\geq 100$
Specific heat capacity [J/kgK]	2100		2100										2100
Maximum working temperature [°C]			110										110
Fire reaction Euro Class as per EN 13501-1	E		E										E
Joint type			Tongue and groove								Flush-mount	Flush-mount	
Version	Packed	Unpacked											
Thickness [mm]	330		40	60	80	100	120	140	160	180	200	60	50
Length x width [mm x mm]	400 x 800		1760 x 600								3000 x 1250		1250 x 600
Actual coverage: Length x width [mm x mm]			1740 x 580										
Actual coverage: Square metres per board [m <sup>2</sup> ]			1.01										
kg/Bale	15.00		1.05								3.75		0.75
Weight per board [kg]			5.90	8.90	11.80	14.80	17.70	20.70	23.70	26.60	29.60	31.50	5.60
Weight per m <sup>2</sup> [kg]			5.60	8.40	11.20	14.00	16.80	19.60	22.40	25.20	28.00	8.40	7.50
Bale/Pallet	21	18	54	36	26	22	18	16	14	12	10	15	84
Square metres per pallet [m <sup>2</sup> ]			57.02	38.01	27.45	23.23	19.00	16.89	14.78	12.67	10.56	56.25	63.00
Weight per pallet [kg]	330	290	350		330	350					320	520	520
Nominal thermal resistance $R_D$ [m <sup>2</sup> K/W]			1.00	1.50	2.00	2.50	3.00	3.50	4.00	4.50	5.00	1.50	1.25
sd value [m]			0.16	0.24	0.32	0.40	0.48	0.56	0.64	0.72	0.80	0.24	0.15



Product name	GUTEX Thermosafe-wd						GUTEX Thermosafe-nf	GUTEX Thermofloor		GUTEX Happy Step
Bulk density $\rho$ [kg/m <sup>3</sup> ]	~ 140						~ 130	~ 160		~ 260
Nominal thermal conductivity $\lambda_D$ [W/mK]	0.040						0.039	0.040		0.046
Vapour diffusion $\mu$	3						3	5		5
Compressive stress/strength [kPa]	$\geq 70$									$\geq 100$
Short-term water absorption [kg/m <sup>2</sup> ]										$\leq 2$
Dynamic stiffness [MN/m <sup>3</sup> ]							$\leq 50$	$\leq 30$		
Compressibility with live loads $\leq 5$ kPa [mm]	2						2	2		
Air flow resistivity [kPa s/m <sup>2</sup> ]	$\geq 100$						$\geq 100$	$\geq 100$		$\geq 100$
Specific heat capacity [J/kgK]	2100						2100	2100		2100
Maximum working temperature [°C]	110						110	110		110
Fire reaction Euro Class as per EN 13501-1	E						E	E		E
Joint type	Flush-mount						Tongue and groove	Flush-mount		Flush-mount
Thickness [mm]	30	40	60	80	100	120	40	20	30	6
Length x width [mm x mm]	1250 x 600						1190 x 380	1200 x 600		860 x 590
Actual coverage: Length x width [mm x mm]							1170 x 360			
Actual coverage: Square metres per board [m <sup>2</sup> ]							0.42			
m <sup>2</sup> /Piece(s)	0.75						0.45	0.72		0.50
Weight per board [kg]	3.20	4.20	6.30	8.40	10.50	12.60	2.35	2.30	3.50	0.80
Weight per m <sup>2</sup> [kg]	4.20	5.60	8.40	11.20	14.00	16.80	5.20	3.20	4.80	1.60
Piece(s)/Package										20
Packs per pallet										32
Piece(s)/Pallet	140	112	70	56	42	36	75	180	120	640
Square metres per pallet [m <sup>2</sup> ]	105.00	84.00	52.50	42.00	31.50	27.00	33.91	129.60	86.40	324.73
Weight per pallet [kg]	520	510	460	490	470		200	450		540
Nominal thermal resistance $R_D$ [m <sup>2</sup> K/W]	0.75	1.00	1.50	2.00	2.50	3.00	1.00	0.50	0.75	0.10
sd value [m]	0.09	0.12	0.18	0.24	0.30	0.36	0.12	0.10	0.15	0.03

Product name	GUTEX Thermowall															
Bulk density $\rho$ [kg/m <sup>3</sup> ]	~ 160															
Nominal thermal conductivity $\lambda_D$ [W/mK]	0.040															
Vapour diffusion $\mu$	4															
Compressive stress/strength [kPa]	≥ 100															
Tensile strength perpendicular to the surface [kPa]	≥ 10															
Short-term water absorption [kg/m <sup>2</sup> ]	≤ 1															
Air flow resistivity [kPa s/m <sup>2</sup> ]	≥ 100															
Specific heat capacity [J/kgK]	2100															
Maximum working temperature [°C]	110															
Fire reaction Euro Class as per EN 13501-1	E															
Joint type	Flush-mount															
Thickness [mm]	20	40	60	80	100	140	120	160	80	100	120	80	100	120	80	
Length x width [mm x mm]	1250 x 590				830 x 600				2600 x 1250				2800 x 1250			
Actual coverage: Length x width [mm x mm]																
Actual coverage: Square metres per board [m <sup>2</sup> ]																
m <sup>2</sup> /Piece(s)	0.73				0.49				3.25				3.50			
Weight per board [kg]	2.40	4.70	7.10	9.40	8.00	11.20	9.60	12.70	41.60	52.00	62.40	44.80	56.00	67.20	10.00	
Weight per m <sup>2</sup> [kg]	3.20	6.40	9.60	12.80	16.00	22.40	19.20	25.60	12.80	16.00	19.20	12.80	16.00	19.20	12.80	
Piece(s)/Pallet	224	112	70	56	40	28	32	24	12	9	8	12	9	8	56	
Square metres per pallet [m <sup>2</sup> ]	165.20	82.60	51.62	41.30	19.92	13.94	15.93	11.95	39.00	29.25	26.00	42.00	31.50	28.00	43.68	
Weight per pallet [kg]	590	510	480	490	320		310			520		550	520	550	510	
Nominal thermal resistance $R_D$ [m <sup>2</sup> K/W]	0.50	1.00	1.50	2.00	2.50	3.50	3.00	4.00	2.00	2.50	3.00	2.00	2.50	3.00	2.00	
sd value [m]	0.08	0.16	0.24	0.32	0.40	0.56	0.48	0.64	0.32	0.40	0.48	0.32	0.40	0.48	0.32	

Product name	GUTEX Thermowall-gf									GUTEX Thermowall-l				
Bulk density $\rho$ [kg/m <sup>3</sup> ]	~ 185									~ 110				
Nominal thermal conductivity $\lambda_D$ [W/mK]	0.043									0.038				
Vapour diffusion $\mu$	3									3				
Compressive stress/strength [kPa]	$\geq 150$									$\geq 50$				
Tensile strength perpendicular to the surface [kPa]	$\geq 20$									$\geq 7.5$				
Short-term water absorption [kg/m <sup>2</sup> ]	$\leq 1$									$\leq 1$				
Air flow resistivity [kPa s/m <sup>2</sup> ]	$\geq 100$									$\geq 100$				
Specific heat capacity [J/kgK]	2100									2100				
Maximum working temperature [°C]	110									110				
Fire reaction Euro Class as per EN 13501-1	E									E				
Joint type	Tongue and groove				Flush-mount					Flush-mount				
Thickness [mm]	40	60			40	60	40	60		120	140	160		
Length x width [mm x mm]	1300 x 600		1800 x 600		2576 x 1176		2600 x 1250		2800 x 1250		3000 x 1250		1250 x 590	
Actual coverage: Length x width [mm x mm]	1275 x 575		1775 x 575		2551 x 1151									
Actual coverage: Square metres per board [m <sup>2</sup> ]	0.73		1.02		2.94									
m <sup>2</sup> /Piece(s)	0.78		1.08		3.02		3.25		3.50		3.75		0.73	
Weight per board [kg]	5.80	8.70	12.00	33.60	24.10	36.10	25.90	38.90	41.60	9.70	11.40	13.00		
Weight per m <sup>2</sup> [kg]	7.40	11.10			7.40	11.10	7.40	11.10		13.20	15.40	17.60		
Piece(s)/Pallet	108	72	36	18	24	15	24	15		36	32	28		
Square metres per pallet [m <sup>2</sup> ]	84.24	56.16	38.88	54.52	78.00	48.75	84.00	52.50	56.25	26.55	23.60	20.65		
Weight per pallet [kg]	680		490		680		610	640	730	680	730		390	
Nominal thermal resistance $R_D$ [m <sup>2</sup> K/W]	0.90	1.35			0.90	1.35	0.90	1.35		3.15	3.65	4.20		
sd value [m]	0.12	0.18			0.12	0.18	0.12	0.18		0.36	0.42	0.48		

**Notes**

The thermal resistivity is based on  $\lambda_{90/90}$  and b

GUTEX will be glad to send you test reports

GUTEX Multiplex-top and GUTEX Ultratherm

GUTEX Standard-n: Other dimensions availab

GUTEX Thermowall-gf: Suitable for REI 90 co

GUTEX Pyroresist wall: Non-smouldering PB  
available



**GUTEX**  
**BENEFITS**

Pleasant living climate

Perfect sound insulation

Summer heat protection

Winter cold insulation

System reliability

Sustainability

Service

**Certified quality**

Our products are made from sustainable Black Forest fir and spruce – the ideal basis for high quality wood fibre insulation materials. The natureplus® certificate also guarantees their health compatibility, environmentally friendly production, and suitability for use.



**HOTLINE**

**GUTEX application engineering**

+49 7741 6099-125 ▪ anwendungstechnik@gutex.de



---

For over 20 years, Ecological Building Systems has been at the forefront of environmental and sustainable building products supplying a range of innovative airtightness solutions and natural insulations backed up with expert technical support.

**As product suppliers in the UK and Ireland, we're happy to assist you with your projects and have expert technical and sales advice on hand.**



**Call us**

**Great Britain** +44 (0)1228 711511

**Ireland** +353 46 9432104



**Email us**

[info@ecologicalbuildingsystems.com](mailto:info@ecologicalbuildingsystems.com)



**Find us**

**Great Britain** Ecological Building Systems UK Ltd.,  
Cardewlees, Carlisle, Cumbria, CA5 6LF,  
United Kingdom

**Ireland** Ecological Building Systems Ltd.,  
Main Street, Athboy. Co. Meath, C15 Y678,  
Republic of Ireland