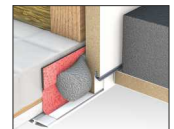


Wellhöfer advantages

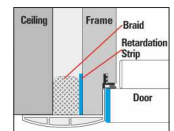
- 15 years functional guarantee
- Low-emission tested, BREEAM-certified, climate neutral
- Lots of flexibility through custom-made products
- Standard height 25 cm, custom-made for any ceiling thickness 17 - 90 cm
- Attic stairs GutHolz
High-quality beech steps: 9 cm deep, 36 cm wide, stair width 40 cm. Pine stringers knot-free. Dovetail joint. 2-component feet covers as standard.
- Attic stairs AluDrei
Aluminium. Tested for 200 kg loading. 11 cm deep steps.
- Concertina attic stairs Liliput
Aluminium. 11 cm deep steps. Floor-to-ceiling height max. 410 cm.
- Very good component-tested U values in certified test institute with test certificate
- Ceiling connection system as standard always included (also with fire protection products)
- Cover profiles as standard always included
- Guardrail according to regulations, stability-tested



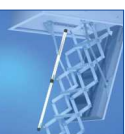
Energy conservation



Fire protection

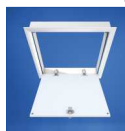


User safety



More products

Flat roof exits, access hatches, wall hatches



Gutfühlen mit Wellhöfer

Wellhöfer Treppen GmbH & Co.KG
Max-Mengeringhausen-Straße 1
97084 Würzburg, Germany

Tel. +49 (0)9 31 / 6 14 05-0
Fax +49 (0)9 31 / 6 14 05 71

www.wellhoefer.de
info@wellhoefer.de

wellhöfer
TREPPEN AUS WÜRZBURG
Made in Germany

For over 20 years, Ecological Building Systems has been at the forefront of environmental and sustainable building products supplying a range of innovative airtightness solutions and natural insulations backed up with expert technical support.

As product suppliers in the UK and Ireland, we're happy to assist you with your projects and have expert technical and sales advice on hand.



Call us

Great Britain +44 (0)1228 711511

Ireland +353 46 9432104



Email us

info@ecologicalbuildingsystems.com



Find us

Great Britain Ecological Building Systems UK Ltd.,
Cardewlees, Carlisle, Cumbria, CA5 6LF,
United Kingdom

Ireland Ecological Building Systems Ltd.,
Main Street, Athboy. Co. Meath, C15 Y678,
Republic of Ireland